

Rock'n'Trii – Product Specification



Rock'n'Trii – A Trii Base enthroned on a rock

Our playhouse on the edge of the cliff. Can you make the ascent?

Rock'n'Trii – at a glance.

Product Family:	Greenville	Number of Foundations:	1 pc.
Item Number:	90.292.301.0	Concrete Volume C20/C25:	3.8 m³ (135 ft³)
Children's Age:	5+	Number of skilled installers required:	3
Fall Height (DIN EN 1176):	2.99m (9'-10")	Installation Time without foundation:	3 hours
Length x Width x Height:	1.7 m x 1.9 m x 5.1 m (5'-7" x 6'-3" x 16'-9")	Dimensions of largest part:	1.7 m x 1.9 m x 3.0 m (5'-7" x 6'-3" x 9'-11")
Protective Surfacing Area (DIN EN 1176):	6.7 m x 6.9 m	Weight of heaviest part:	Upon request
Protective Surfacing Area (ASTM 1487):	6.1 m x 6.5 m (20'-1" x 21'-4")	Shipping Volume:	Upon request
Minimum space required DIN EN 1176:	35.5 m²	Spare part guarantee:	Lifelong
Minimum space required ASTM 1487:	29.8 m² (321 sf)		

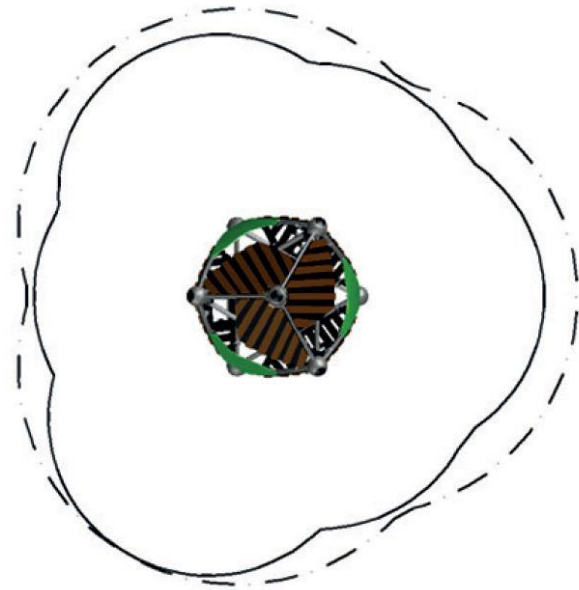
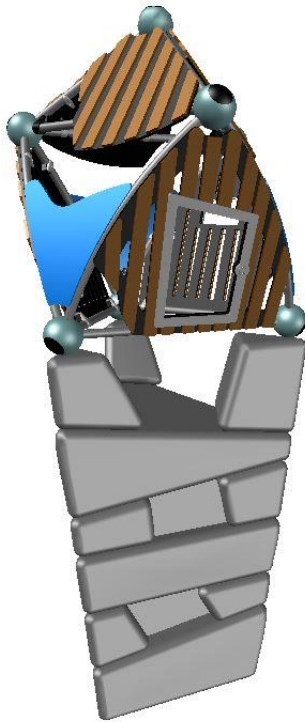



Berliner
 Berliner Seilfabrik GmbH & Co.
 Lengeder Straße 2/4
 D-13407 Berlin

Tel. +49.(0)30.41 47 24-0
 Fax +49.(0)30.41 47 24-33

info@berliner-seilfabrik.com
 www.berliner-seilfabrik.com

Rock'n'Trii – Product Specification



Technical Data.

The following text can also be used for tenders.

Tube framework:

A combination of straight and bended stainless steel Frameworkx-®tubes, Ø 60,3 m (2 3/8"), material AISI304 (DIN 1.4301). The tubes are connected to build a space framework with a triangular footprint

Nodes:

Frameworkx-aluminum ball connectors; Ø 250 mm (9'-13/16"); anti-corrosion treatment and color finish: sandblasting and solvent-free zinc-/ epoxy-/ polyester-process; incorporating an ASTEM TT net tensioning system; securely closed with durable EPDM- caps

Connections:

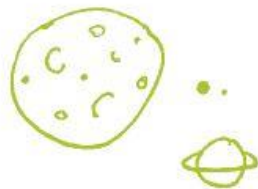
Number of mechanical components as less as possible; all bolts and nuts exposing permanently to the weather consist of stainless steel

Bamboo panels:

Bamboo strips 90 mm, (3'-1/2") mounted at a particle board made from HDPE, 19 mm (3/4") thickness, rounded edges, mounted with aluminum plate clamps to the tubes of the framework

Rock:

Concrete formed component like a rock




Berliner
Berliner Seilfabrik GmbH & Co.
Lengeder Straße 2/4
D-13407 Berlin

Tel. +49.(0)30.41 47 24-0
Fax +49.(0)30.41 47 24-33

info@berliner-seilfabrik.com
www.berliner-seilfabrik.com